

POSSIBILITIES

SPRING 2018

Division of Information Technology

ABOUT THIS ISSUE

The year 2017 was an eventful one for the Division of IT! In this issue, we'll take a look at "The Shape of IT," the division's recently released annual report. We'll also introduce the new Chief Information Security Officer, update you on the West Campus Data Center and let you know how to protect your data from the Meltdown and Spectre computer processor vulnerabilities.

A number of exciting plans are in the works for the Division of IT in 2018! We hope you will follow our updates on Twitter @TAMU_IT and on Facebook at [facebook.com/tamuit](https://www.facebook.com/tamuit).



CAMPUS COMMUNITY SAVES MILLIONS

Software Center Offers Deals

Thanks to licensing agreements with software companies, the Software Center allows faculty, staff and students to obtain much-needed software for free or at highly reduced prices. Campus members saved more than \$5.5 million on Microsoft products alone in 2017, with over 10,750 copies of Office 2016 Professional for Windows sold and over 6,000 copies of Office 2016 for Mac distributed.

The Software Center's website at software.tamu.edu recently received a facelift to make purchases more efficient and eligibility easier to determine. Software download links are emailed shortly after purchase.



Sardaryzadeh Joins Division of IT

You may have seen a new face around the Division of IT. In February, Michael A. Sardaryzadeh joined Texas A&M University as Associate Vice President for Cybersecurity, Policy and Compliance and the Chief Information Security Officer (CISO). Dr. Sardaryzadeh was previously CISO for Prime Healthcare, one of the nation's largest for-profit healthcare systems in the country. He earlier served as Director of Cybersecurity for General Electric.



WEST CAMPUS DATA CENTER

New Facility Welcomes First Tenants

The new West Campus Data Center (WCDC) kicked off 2018 by welcoming its first tenants: The College of Geosciences, Transportation Services, Ecosystem Science and Management from the College of Agriculture and Life Sciences and the Division of Finance. Several other campus units are in planning stages to move to the WCDC.

The new data center more than doubles the previous data center space on campus and allows many individually managed servers to be consolidated to a single location.

In 2018, the WCDC will premiere AggieCloud, a new on-premise virtualization service. The new offering will allow self-service provisioning and the capability to do load balancing and firewalls at the virtual level.

Check out “The Shape of IT”

The 2017 Division of IT Annual Report is now available online at u.tamu.edu/annualreport and provides “The Shape of IT.”

In addition to an expenditure summary and division statistics, the report takes a look at a number of the division’s accomplishments.



7.4 MILLION

blocked connections to malicious sites with the campus firewall

5.8 MILLION

emails inspected daily for spam, phishing & viruses



Response to
HURRICANE HARVEY

Opening of the new
HELP DESK CENTRAL
and **INCIDENT & OPERATIONS CENTER**



THE DIVISION OF IT PROTECTS



212,000
accounts



140,000
mailboxes



100,000
devices

in an average moment in time

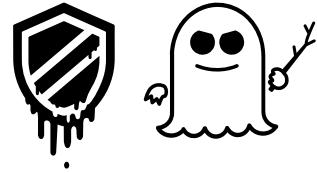


Initiated
IT GOVERNANCE FRAMEWORK

LESS THAN 30 MINUTES

average response time for identifying and shutting down a compromised email account





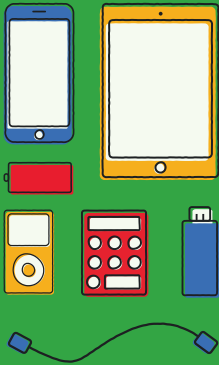
PROTECT YOURSELF

Meltdown and Spectre Explained

The tech world was rocked in January when three major computer chip manufacturers acknowledged security flaws known as Meltdown and Spectre. What are they and how can you protect yourself and your private data?

The flaws take advantage of features built into almost all chips manufactured over the past 20 years to make them run faster. If exploited, the glitches could allow attackers to access data you thought was protected.

Since computers with Intel, AMD and ARM processors are vulnerable, experts advise keeping your operating system, browser, firmware and all software updated. They also recommend the regular use of antivirus and anti-malware software to detect malicious activity. Windows users can also download InSpectre, a free utility from Gibson Research Software that analyzes your system and lets you know if it is still vulnerable. The tool can be downloaded at grc.com/inspectre.htm



Keep Aggieland Free From e-Waste

With Earth Day around the corner, the Division of IT, the Environmental Issues Committee, the Environmental Sustainability Group and the Environmental Programs Involvement Committee emphasize the importance of electronics recycling. Drop off batteries, cables, calculators, cameras, cell phones, headphones, flash drives, laptops, MP3 players and tablets from **April 16–20**. Collection sites will be in Blocker, the General Services Complex, Help Desk Central, MacResources MSC, the School of Public Health and the West Campus Library. Be sure to clear personal information before recycling devices.

*University-owned property not accepted.

*Visit u.tamu.edu/earthday for more information.